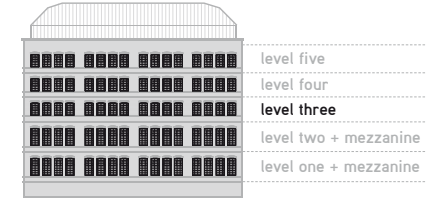
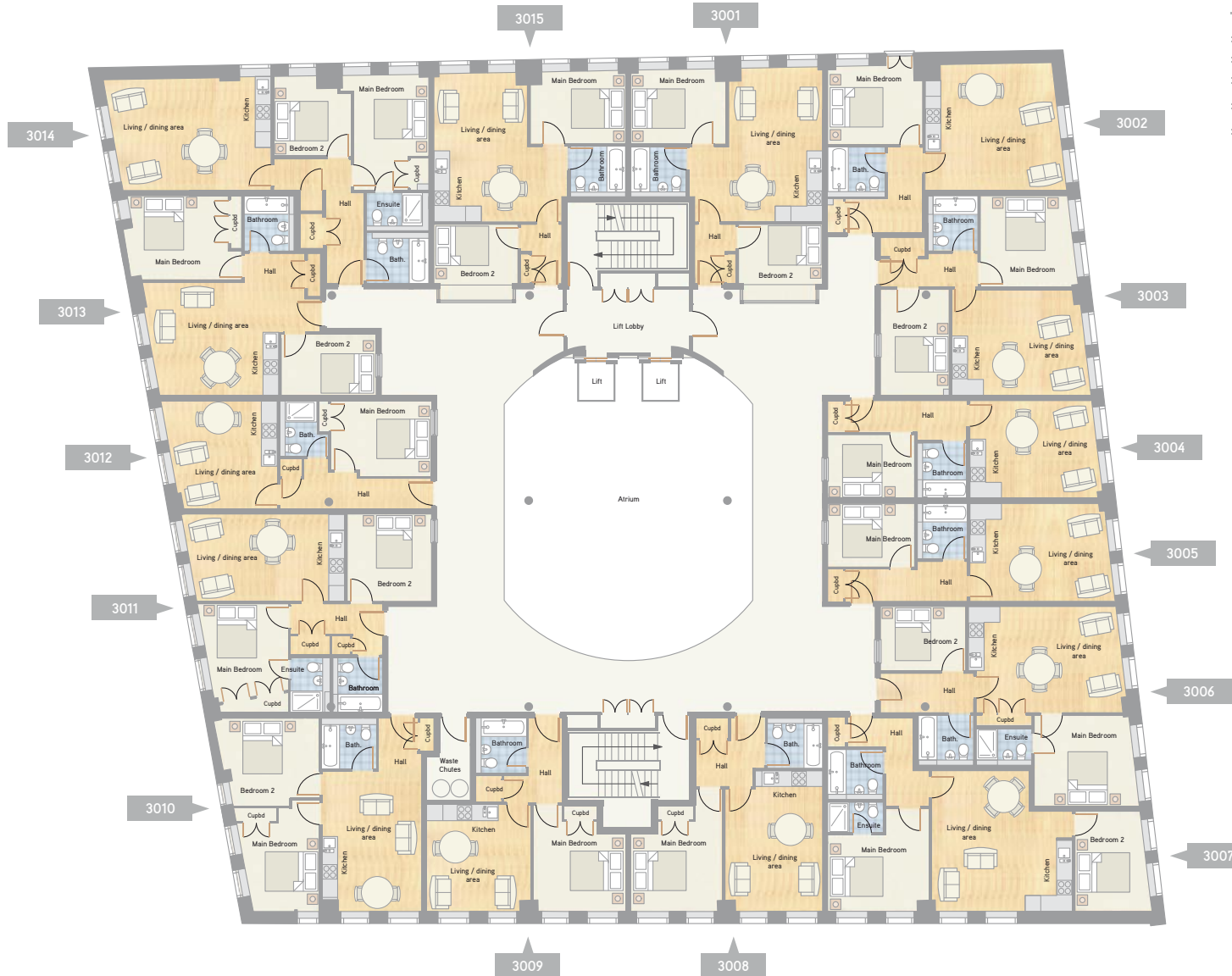


# level three



## level three dimensions

<b>Apartment 3001</b>		<b>52.5m<sup>2</sup> (565sq.ft)</b>
Living area	5.0m x 5.8m	19'4" x 16'8"
Bedroom 1	3.5m x 2.8m	11'9" x 9'3"
Bedroom 2	3.2m x 2.2m	10'7" x 7'4"

---

<b>Apartment 3002</b>		<b>46.6m<sup>2</sup> (501sq.ft)</b>
Living area	4.9m x 4.8m	16'2" x 15'10"
Bedroom 1	3.5m x 2.9m	11'6" x 9'9"

---

<b>Apartment 3003</b>		<b>53.6m<sup>2</sup> (577sq.ft)</b>
Living area	5.27m x 3.9m	17'3" x 13'0"
Bedroom 1	3.4m x 3.4m	11'5" x 11'5"
Bedroom 2	2.5m x 3.9m	13'0" x 8'6"

---

<b>Apartment 3004</b>		<b>38.1m<sup>2</sup> (410sq.ft)</b>
Living area	4.8m x 3.6m	16'0" x 12'2"
Bedroom 1	3.3m x 2.4m	11'1" x 8'0"

---

<b>Apartment 3005</b>		<b>39.1m<sup>2</sup> (421sq.ft)</b>
Living area	5.5m x 3.6m	18'1" x 11'11"
Bedroom 1	3.3m x 2.3m	11'1" x 7'7"

---

<b>Apartment 3006</b>		<b>58.3m<sup>2</sup> (627sq.ft)</b>
Living area	5.5m x 3.9m	18'3" x 13'0"
Bedroom 1	3.9m x 3.4m	13'0" x 11'4"
Bedroom 2	3.2m x 2.4m	10'7" x 8'0"

---

<b>Apartment 3007</b>		<b>63.1m<sup>2</sup> (679sq.ft)</b>
Living area	5.3m x 5.3m	17'5" x 17'5"
Bedroom 1	3.8m x 2.8m	12'7" x 9'4"
Bedroom 2	2.9m x 3.7m	12'4" x 9'6"

---

<b>Apartment 3008</b>		<b>43.8m<sup>2</sup> (471sq.ft)</b>
Living area	3.7m x 5.3m	17'7" x 12'2"
Bedroom 1	3.4m x 2.9m	11'5" x 9'8"

---

<b>Apartment 3009</b>		<b>39.4m<sup>2</sup> (424sq.ft)</b>
Living area	3.9m x 4.0m	13'3" x 12'11"
Bedroom 1	3.4m x 2.9m	11'5" x 9'7"

---

<b>Apartment 3010</b>		<b>52.2m<sup>2</sup> (562sq.ft)</b>
Living area	3.7m x 5.3m	17'6" x 12'4"
Bedroom 1	3.1m x 4.2m	13'11" x 10'4"
Bedroom 2	2.9m x 3.3m	11'0" x 13'0"

---

<b>Apartment 3011</b>		<b>58m<sup>2</sup> (624sq.ft)</b>
Living area	6.2m x 3.2m	20'4" x 10'8"
Bedroom 1	3.5m x 3.7m	12'5" x 11'7"
Bedroom 2	3.1m x 3.2m	10'8" x 10'4"

---

<b>Apartment 3012</b>		<b>40.1m<sup>2</sup> (431sq.ft)</b>
Living area	4.4m x 4.0m	13'4" x 14'7"
Bedroom 1	3.7m x 2.8m	12'5" x 9'5"

---

<b>Apartment 3013</b>		<b>53.7m<sup>2</sup> (578sq.ft)</b>
Living area	6.7m x 4.2m	14'0" x 22'0"
Bedroom 1	3.8m x 3.1m	12'7" x 10'5"
Bedroom 2	3.5m x 2.2m	11'9" x 7'6"

---

<b>Apartment 3014</b>		<b>66.2m<sup>2</sup> (712sq.ft)</b>
Living area	6.3m x 4.1m	20'11" x 13'9"
Bedroom 1	2.8m x 4.3m	14'4" x 9'3"
Bedroom 2	2.9m x 3.0m	9'11" x 9'6"

---

<b>Apartment 3015</b>		<b>51.5m<sup>2</sup> (554sq.ft)</b>
Living area	5.0m x 5.5m	16'8" x 18'1"
Bedroom 1	3.5m x 2.7m	11'9" x 9'0"
Bedroom 2	3.2m x 2.2m	10'7" x 7'4"

---

The Robinson Building, East Street  
Bedminster, Bristol BS3 4NQ

**call 0117 366 0070**  
**[info@therobinsonbuilding.co.uk](mailto:info@therobinsonbuilding.co.uk)**  
**[www.therobinsonbuilding.co.uk](http://www.therobinsonbuilding.co.uk)**

### Important notice

These particulars have been prepared in good faith to give a fair overall view of the property and details may vary from time to time. It should not be assumed that any contents/furnishings/furniture etc photographed or illustrated in these particulars are included in the sale. Any distances referred to are given as a guide only and are not precise. The information in these particulars does not constitute any part of a contract or a warranty.