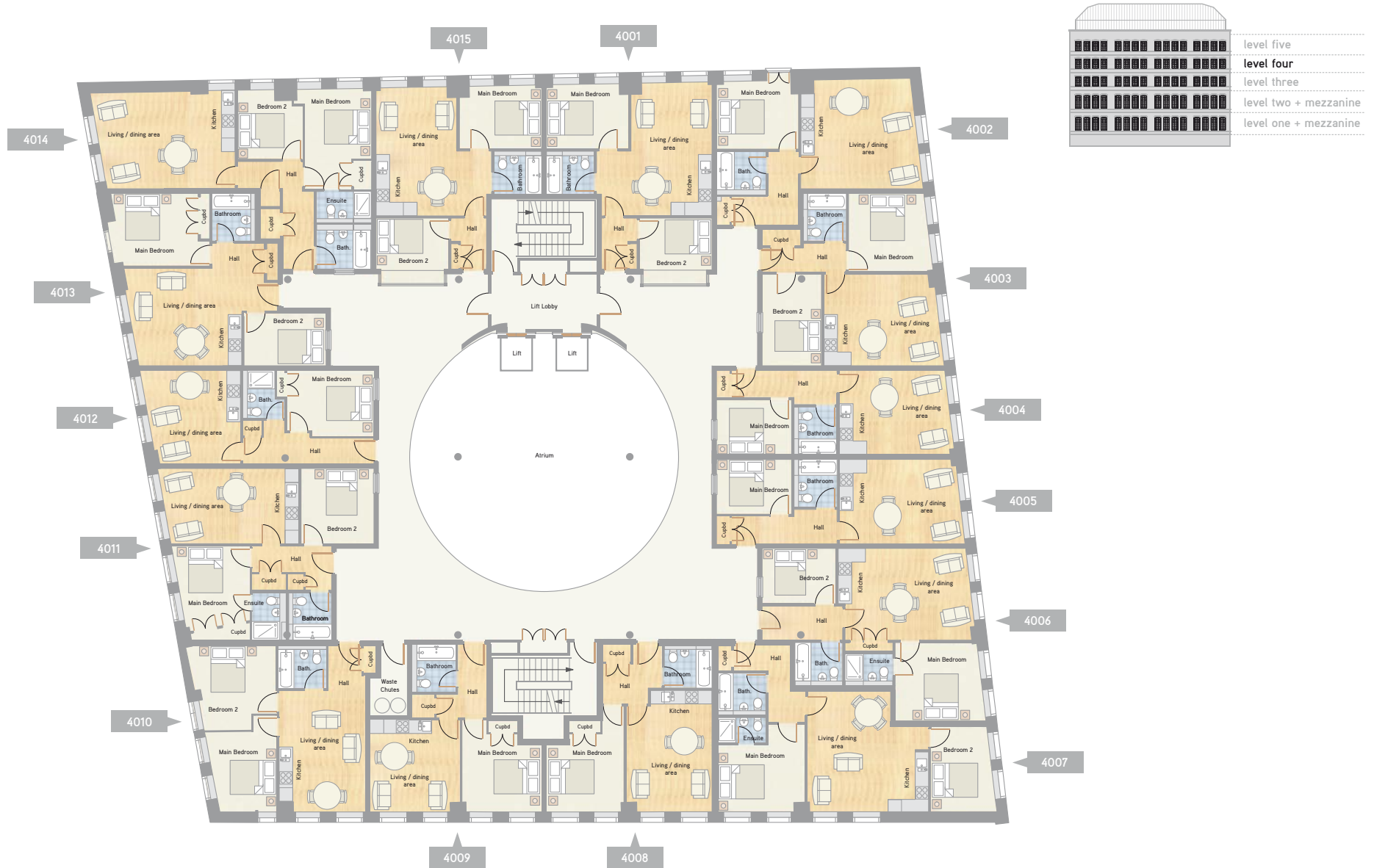


level four



level four dimensions

Apartment 4001		52.5m² (565sq.ft)
Living area	5.0m x 5.8m	19'4" x 16'8"
Bedroom 1	3.5m x 2.8m	11'9" x 9'3"
Bedroom 2	3.2m x 2.2m	10'7" x 7'4"

Apartment 4002		46.6m² (501sq.ft)
Living area	4.9m x 4.8m	16'2" x 15'10"
Bedroom 1	3.50m x 2.9m	11'6" x 9'9"

Apartment 4003		53.6m² (577sq.ft)
Living area	5.2m x 3.9m	17'3" x 13'0"
Bedroom 1	3.4m x 3.4m	11'5" x 11'5"
Bedroom 2	2.5m x 3.9m	13'0" x 8'6"

Apartment 4004		37.9m² (408sq.ft)
Living area	4.8m x 3.6m	16'0" x 12'2"
Bedroom 1	3.3m x 2.4m	11'1" x 8'0"

Apartment 4005		39.1m² (421sq.ft)
Living area	5.5m x 3.6m	18'1" x 11'11"
Bedroom 1	3.3m x 2.3m	11'1" x 7'7"

Apartment 4006		58.5m² (629sq.ft)
Living area	5.5m x 3.9m	18'3" x 13'0"
Bedroom 1	3.9m x 3.4m	13'0" x 11'4"
Bedroom 2	3.2m x 2.4m	10'7" x 8'0"

Apartment 4007		62.8m² (676sq.ft)
Living area	5.3m x 5.3m	17'5" x 17'5"
Bedroom 1	3.8m x 2.8m	12'6" x 9'4"
Bedroom 2	2.9m x 3.7m	12'4" x 9'6"

Apartment 4008		43.8m² (471sq.ft)
Living area	3.7m x 5.3m	17'7" x 12'2"
Bedroom 1	3.4m x 2.9m	11'5" x 9'8"

Apartment 4009		39.4m² (424sq.ft)
Living area	3.9m x 4.0m	13'3" x 12'11"
Bedroom 1	3.4m x 2.9m	11'5" x 9'7"

Apartment 4010		52.2m² (562sq.ft)
Living area	3.7m x 5.3m	17'6" x 12'4"
Bedroom 1	3.1m x 4.2m	13'11" x 10'4"
Bedroom 2	3.9m x 3.7m	13'0" x 12'5"

Apartment 4011		58m² (624sq.ft)
Living area	6.2m x 3.2m	20'4" x 10'8"
Bedroom 1	3.5m x 3.7m	11'7" x 12'5"
Bedroom 2	3.1m x 3.2m	10'5" x 10'8"

Apartment 4012		40.1m² (431sq.ft)
Living area	4.4m x 4.0m	13'4" x 14'7"
Bedroom 1	3.7m x 2.8m	12'5" x 9'5"

Apartment 4013		53.7m² (578sq.ft)
Living area	6.7m x 4.2m	14'0" x 22'2"
Bedroom 1	3.8m x 3.1m	10'5" x 12'7"
Bedroom 2	3.5m x 2.2m	11'9" x 7'6"

Apartment 4014		66.2m² (712sq.ft)
Living area	6.3m x 4.1m	20'11" x 13'9"
Bedroom 1	2.8m x 4.3m	9'3" x 14'4"
Bedroom 2	2.9m x 3.0m	9'11" x 9'6"

Apartment 4015		51.5m² (554sq.ft)
Living area	3.5m x 5.5m	18'1" x 16'8"
Bedroom 1	3.5m x 2.7m	11'9" x 9'0"
Bedroom 2	3.2m x 2.2m	10'7" x 7'4"

The Robinson Building, East Street
Bedminster, Bristol BS3 4NQ

call 0117 366 0070
info@therobinsonbuilding.co.uk
www.therobinsonbuilding.co.uk

Important notice

These particulars have been prepared in good faith to give a fair overall view of the property and details may vary from time to time. It should not be assumed that any contents/furnishings/furniture etc photographed or illustrated in these particulars are included in the sale. Any distances referred to are given as a guide only and are not precise. The information in these particulars does not constitute any part of a contract or a warranty.